

262

DATE REVISED	DATE FILMED	DATE REVISED	DATE FILMED	FED. ROAD DIST. NO.	STATE	FED. AID PROJ. NO.	SHEET NO.	TOTAL SHEETS
				6	ARK.	5611A&B, 5612A&B	13	211
				JOB NO.		2783		

① 5611A&B, 5612A&B QUANT. 19029

SCHEDULE OF BRIDGE QUANTITIES

BRIDGE NO.	CODE NO.	NAME PLATE TITLE	UNIT OF STRUCTURE	ITEM NO	801	SP# 802	SP# 802	803	804	* SP# 805	806	SP# 807	SP# 807	SP# 807	SP# 807	809	812	916
				ITEM	UNCLASSIFIED EXCAVATION FOR STRUCTURES - BRIDGE	CLASS 5 CONCRETE	CLASS 5(AE) CONCRETE	BOILED LINSEED OIL	REINFORCING STEEL (GRADE 60)	PRECAST CONCRETE PILING (16" OCT)	METAL BRIDGE RAILING (TYPE A)	STRUCTURAL STEEL IN BEAM SPANS (A36)	STRUCTURAL STEEL IN BEAM SPANS (A572-50)	STRUCTURAL STEEL IN PLATE GIRDER SPANS (A36)	STRUCTURAL STEEL IN PLATE GIRDER SPANS (A572-50)	PREFORMED JOINT SEALER	BRIDGE NAME PLATE (TYPE C)	CONCRETE RIPRAP
5611A	1271	HIGHWAY 104	END BENT NO. 1	CU YD	116	35.63		0.2	3059	280				3407				130
			INT. BENT NO. 2		19	51.81			7341	530								
			INT. BENT NO. 3		82	51.74			7341	525								
			END BENT NO. 4		116	33.52		0.2	3059	280				3407			1	112
			242'-0" CONT. PL GIRDER UNIT				275.60	23.3	66230		484		181456	30810				
			TOTAL FOR BR NO. 5611A		393	170.70	275.60	23.7	87030	1615	484		188270	30810			1	242
5611B	1271	HIGHWAY 104	END BENT NO. 1		116	33.32		0.2	3059	280				3407			1	112
			INT. BENT NO. 2		81	50.49			7182	525								
			INT. BENT NO. 3		73	49.61			6823	525								
			END BENT NO. 4		116	33.58		0.2	3059	285				3407				115
			242'-0" CONT. PL GIRDER UNIT				275.60	23.3	66237		484		181456	30810				
			TOTAL FOR BR NO. 5611B		386	167.00	275.60	23.7	86260	1615	484		188270	30810			1	227
5612A	1271	JEFFERSON ROAD	END BENT NO. 1		45	26.90		0.2	2424	175		763						17
			INT. BENT NO. 2		108	36.14			4453	300								
			INT. BENT NO. 3		107	36.14			5350	305								
			END BENT NO. 4		36	25.52		0.2	2326	175		763					1	84
			144'-0" CONT. PL GIRDER UNIT				164.20	14.4	39357		288	19184	76910			90.0		
			TOTAL FOR BR NO. 5612A		296	124.70	164.20	14.8	53910	955	288	19710	76910			90.0	1	161
5612B	1271	JEFFERSON ROAD	END BENT NO. 1		36	25.52		0.2	2326	175		763						84
			INT. BENT NO. 2		87	35.04			4712	305								
			INT. BENT NO. 3		86	35.05			4296	300								
			END BENT NO. 4		45	26.07		0.2	2424	175		763						74
			144'-0" CONT. PL GIRDER UNIT				164.20	14.4	39362		288	18184	76910			90.0		
			TOTAL FOR BR NO. 5612B		250	122.50	164.20	14.8	53120	955	288	19710	76910			90.0	1	158
TOTAL FOR JOB NO. 2783					1,331	584.90	879.60	77.0	280,320	5,140	1,524	39,420	153,820	376,540	61,620	180.0	4	788

\* Refers to SP 802-5

SCHEDULE OF BRIDGE QUANTITIES  
HIGHWAY 104--JEFFERSON ROAD  
JEFFERSON COUNTY  
ROUTE 65 SEC. 14  
ARKANSAS STATE HIGHWAY COMMISSION

LITTLE ROCK, ARK.  
DRAWN BY: J.P.S. DATE: 10-11-74  
DESIGNED BY: DV DATE: 10-22-74 SCALE: No Scale  
CHECKED BY: DATE: 10-22-74  
BRIDGE NO. 5611A&B, 5612A&B  
DRAWING NO. 19029

*David P. S. Smith*  
BRIDGE ENGINEER







5' KING LEGEND BRIDGES NO.

BORING LEGEND - BRIDGES NO.

DATE REVISED	DATE FILMED	DATE REVISED	DATE FILMED	REV. NO.	STATE	FLD. AID PROJ. NO.	REV. NO.	TOTAL SHEETS
				6	ARK.	EAG R10258(32)		
						JOB NO.	2783	42 211

3611-12 A&B 304 LEGEND 10031

DEPTH - FEET	DESCRIPTION	DEPTH - FEET	DESCRIPTION	DEPTH - FEET	DESCRIPTION	DEPTH - FEET	DESCRIPTION	DEPTH - FEET	DESCRIPTION
A. 0 - 4-1/2	STIFF BROWN SANDY CLAY	HH. 0 - 1-1/2	VERY LOOSE BROWN SILTY SAND N=2	A. 0 - 5-1/2	VERY LOOSE FINE BROWN SAND 2' - 3-1/2' N=1 3' - 5-1/2' N=4	HH. 17-1/2 - 20	MEDIUM DENSE GRAY SILTY SAND 17-1/2' - 19' N=25		
B. 4-1/2 - 7-1/2	DENSE BROWN SAND 5' - 6-1/2' N=51	II. 1-1/2 - 12	DENSE BROWN GRAVELLY SAND 5' - 6-1/2' N=26	B. 5-1/2 - 8	SAND AND GRAVEL	II. 20 - 46	DENSE GRAY SILTY SAND 20' - 21-1/2' N=25 22-1/2' - 24' N=26 25' - 26-1/2' N=31 27-1/2' - 29' N=36 30' - 31-1/2' N=43 35' - 36-1/2' N=40		
C. 7-1/2 - 15-1/2	STIFF TO VERY STIFF GRAY SILTY CLAY 7-1/2' - 9' N=11 10' - 11-1/2' N=11 15' - 16-1/2' N=18	JJ. 12 - 25	VERY STIFF GRAY SILTY CLAY 15' - 16-1/2' N=14 20' - 21-1/2' N=21	C. 8 - 12	MEDIUM STIFF GRAVELLY CLAY 8' - 9-1/2' N=7 9-1/2' - 10' GRAVEL				
J. 15-1/2 - 25	DENSE GRAY SAND WITH CLAY SEAMS 20' - 21-1/2' N=40	KK. 25 - 30	VERY DENSE GRAY SILTY SAND 25' - 26-1/2' N=58	D. 12 - 16	STIFF GRAY SILTY CLAY 12' - 13-1/2' N=15				
E. 25 - 26-1/2	VERY STIFF SAND CLAY N=22	LL. 30 - 31-1/2	HARD GRAY SANDY CLAY N=39	E. 16 - 20	STIFF BROWN ORGANIC CLAY 16' - 17-1/2' N=13	JJ. 0 - 6	LOOSE LIGHT BROWN CLAYEY SAND 3' - 4-1/2' N=5		
F. 26-1/2 - 36-1/2	VERY DENSE SAND WITH CLAY SEAMS 30' - 31-1/2' N=20+ 35' - 36-1/2' N=53	MM. 31-1/2 - 41-1/2	VERY DENSE GRAY SILTY SAND 35' - 36-1/2' N=61 40' - 41-1/2' N=89	F. 20 - 30	HARD BROWN ORGANIC CLAY 20' - 21-1/2' N=56 25' - 26-1/2' N=32	KK. 5 - 17	MEDIUM DENSE FINE SAND WITH THIN CLAY SEAMS 6' - 7-1/2' N=5 9' - 10-1/2' N=11 12' - 13-1/2' N=15		
G. 0 - 2-1/2	VERY LOOSE BROWN SILTY SAND 1' - 2-1/2' N=2	NN. 0 - 2	VERY LOOSE BROWN SILT 0 - 1-1/2' N=2	G. 30 - 40	DENSE BROWN SILTY SAND 30' - 31-1/2' N=33 35' - 36-1/2' N=39	LL. 17 - 27	MEDIUM DENSE SILTY SAND 17' - 18-1/2' N=21 22' - 23-1/2' N=16		
H. 2-1/2 - 5	MEDIUM STIFF GRAY CLAYEY SILT 3' - 4-1/2' N=6	PP. 2 - 5	LOOSE BROWN SILT 2' - 3-1/2' N=5	H. 40 - 56-1/2	MEDIUM DENSE TO VERY STIFF INTERBEDDED GRAY SAND & CLAY LAYERS 40' - 41-1/2' N=18 45' - 46-1/2' N=27 50' - 56-1/2' N=24	MM. 27 - 32	DENSE SILTY SAND 27' - 28-1/2' N=39		
I. 5 - 6-1/2	MEDIUM DENSE GRAVELLY SILTY SAND N=21	QQ. 5 - 12	DENSE LIGHT BROWN SILTY SAND 5' - 6-1/2' N=47 7' - 8-1/2' N=37 10' - 11-1/2' N=28			NN. 32 - 42	VERY DENSE SILTY SAND 32' - 35-1/2' N=56 37' - 38-1/2' N=76		
J. 6-1/2 - 11-1/2	MEDIUM STIFF TO VERY STIFF GRAY CLAY 7-1/2' - 9' N=7 10' - 11-1/2' N=10 15' - 16-1/2' N=19	RR. 12 - 20	STIFF GRAY SAND CLAY 12' - 13-1/2' N=13			FP. 42 - 47	VERY STIFF BROWN ORGANIC CLAY 42' - 43-1/2' N=21		
K. 16-1/2 - 25	DENSE GRAY SILTY SAND 17-1/2' - 19' N=38 20' - 21-1/2' N=45	SS. 20 - 25-1/2	STIFF DARK GRAY SILTY CLAY 20' - 21-1/2' N=11 22' - 23-1/2' N=15 24' - 25-1/2' N=20	I. 0 - 5-1/2	LOOSE GRAVELLY SAND 2' - 3-1/2' N=8 4' - 5-1/2' N=5	QQ. 47 - 48-1/2	VERY STIFF BROWN CLAY 47' - 48-1/2' N=26		
L. 25 - 26-1/2	HARD GRAY SILTY CLAY N=24					RR. 0 - 5	SOFT BROWN SANDY CLAY 2' - 3-1/2' N=4		
M. 26-1/2 - 42-1/2	VERY DENSE GRAY SILTY SAND 30' - 31-1/2' N=100+ 35' - 36-1/2' N=60+ 40' - 41-1/2' N=42					SS. 5 - 10	MEDIUM DENSE GRAY SILTY SAND 5' - 6-1/2' N=12 7' - 7-1/2' GRAVEL 8' - 9-1/2' N=11		
N. 42-1/2 - 43-1/2	HARD GRAY SILTY CLAY N=41					TT. 10 - 35	MEDIUM DENSE TO DENSE GRAY SILTY SAND 10' - 11-1/2' N=32 15' - 16-1/2' N=26 20' - 21-1/2' N=12 25' - 26-1/2' N=20 30' - 31-1/2' N=26		
P. 0 - 5	SOFT BROWN SANDY CLAY					UU. 35 - 46-1/2	DENSE GRAY SILTY SAND WITH THIN CLAY SEAMS 35' - 36-1/2' N=33 40' - 41-1/2' N=21 45' - 46-1/2' N=45		
Q. 5 - 10	MEDIUM DENSE BROWN GRAVELLY CLAYEY SAND 5' - 6-1/2' N=17								
R. 10 - 15	STIFF BROWN CLAY 10' - 11-1/2' N=9					VV. 0 - 4	LOOSE LIGHT BROWN SILTY SAND 2' - 3-1/2' N=5		
S. 15 - 20	VERY STIFF BROWN SILTY CLAY 15' - 16-1/2' N=18					WW. 4 - 5-1/2	STIFF BROWN SANDY SILTY CLAY		
T. 20 - 35	HARD GRAY SANDY CLAY 20' - 21-1/2' N=40 25' - 26-1/2' N=30 30' - 31-1/2' N=37					XX. 5-1/2 - 7	GRAVELLY SAND		
U. 35 - 36-1/2	VERY DENSE SILTY SAND N=100+					YY. 7 - 24	MEDIUM DENSE GRAY SILTY SAND 7' - 8-1/2' N=21 10' - 11-1/2' N=17 15' - 16-1/2' N=13 18' - 19-1/2' N=22 21' - 22-1/2' N=14		
V. 0 - 7-1/2	DENSE BROWN SILTY SAND WITH GRAVEL 2-1/2' - 4' N=45 5' - 6-1/2' N=39					ZZ. 24 - 30	DENSE GRAY SILTY SAND 24' - 25-1/2' N=24 27' - 28-1/2' N=20		
V. 7-1/2 - 19-1/2	STIFF BROWN CLAY 7-1/2' - 9' N=10 10' - 11-1/2' N=8					AAA. 30 - 35	MEDIUM DENSE SILTY SAND 30' - 31-1/2' N=18		
X. 19-1/2 - 25	DENSE GRAY SILTY SAND 20' - 21-1/2' N=51					BBB. 35 - 36-1/2	VERY STIFF GRAY SANDY CLAY N=23		
Y. 25 - 26-1/2	HARD SILTY CLAY LAYER N=31					CCC. 36-1/2 - 45	DENSE GRAY SILTY SAND 40' - 41-1/2' N=34		
Z. 26-1/2 - 35	DENSE GRAY SILTY SAND 30' - 31-1/2' N=36					DDD. 45 - 50	VERY STIFF GRAY SANDY CLAY 45' - 46-1/2' N=23		
AA. 35 - 36-1/2	VERY DENSE GRAY SILTY SAND N=71					EEE. 50 - 60	HARD GRAY SANDY CLAY 50' - 51-1/2' N=34		
BB. 0 - 4	SOFT GRAY SILTY CLAY 2-1/2' - 4' N=5					FFF. 60 - 61-1/2	VERY STIFF GRAY CLAY N=26		
CC. 4 - 3	MEDIUM DENSE BROWN SILTY CLAY 5' - 6-1/2' N=23					GGG. 0 - 7-1/2	MEDIUM DENSE LIGHT BROWN CLAYEY SILT 2-1/2' - 4' N=5		
DD. 3 - 21-1/2	STIFF TO VERY STIFF GRAY SILTY CLAY 8' - 9-1/2' N=18 10' - 11-1/2' N=14 15' - 16-1/2' N=10 20' - 21-1/2' N=20					HHH. 7-1/2 - 10	STIFF GRAY CLAYEY SILT 7-1/2' - 9' N=15		
EE. 21-1/2 - 30	DENSE GRAY SILTY SAND 25' - 26-1/2' N=29					III. 10 - 14	DENSE TO DENSE GRAY SILTY SAND 10' - 11-1/2' N=27		
FF. 30 - 31-1/2	HARD GRAY SILTY CLAY LAYER N=40								
GG. 31-1/2 - 36-1/2	DENSE GRAY SILTY SAND 35' - 36-1/2' N=40								

CONTINUED IN NEXT COLUMN

BOILING LEGENDS  
HIGHWAY 104-JEFFERSON ROAD  
JEFFERSON COUNTY  
ROUTE 65 SEC. 14

ARKANSAS STATE HIGHWAY COMMISSION

LITTLE ROCK, ARK.

DRAWN BY: J.P.S. DATE: 7-12-74

DESIGNED BY: DATE: 10-1-74

CHECKED BY: DV DATE: 10-1-74

BRIDGE NO. 5612 A&B

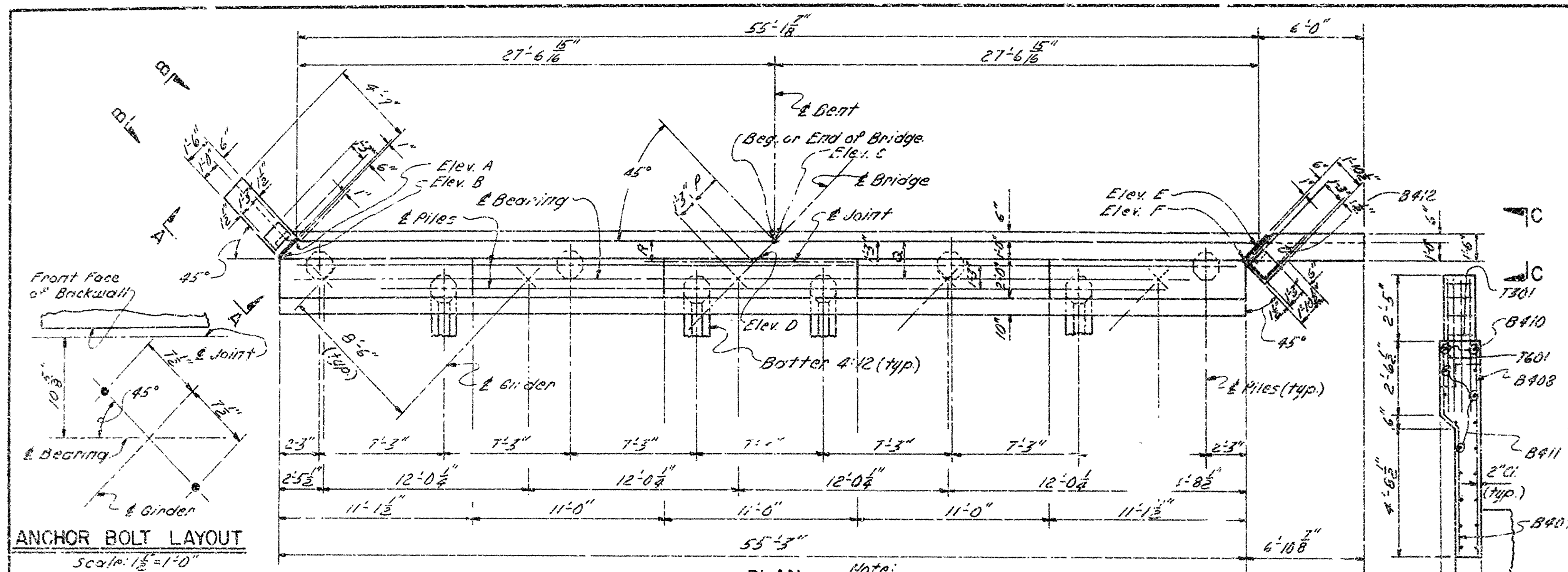
DRAWING NO. 19031

*David Pinkerton*  
BRIDGE ENGINEER

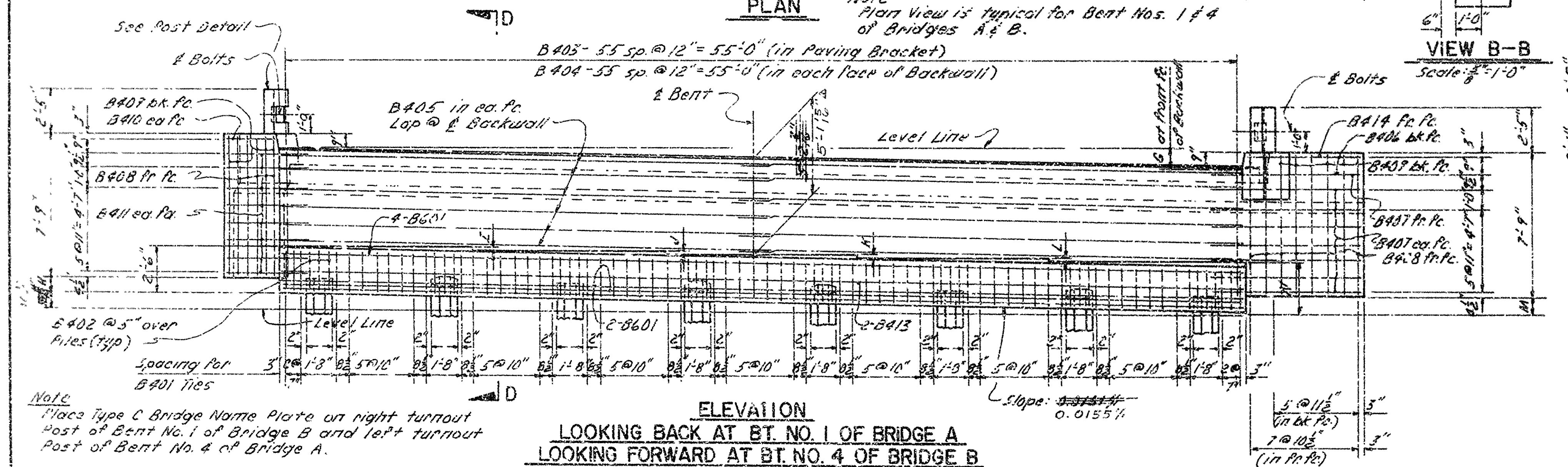


DATE REMOVED	DATE PLUMED	DATE REMOVED	DATE PLUMED	FED. ROAD NO.	STATE	FED. AID PROJ. NO.	SHEET NO.	TOTAL SHEETS
11-3-55	5611575			6	ARK.	EAC RD-1256(2-1)		
				JOB NO.	2782		43	211

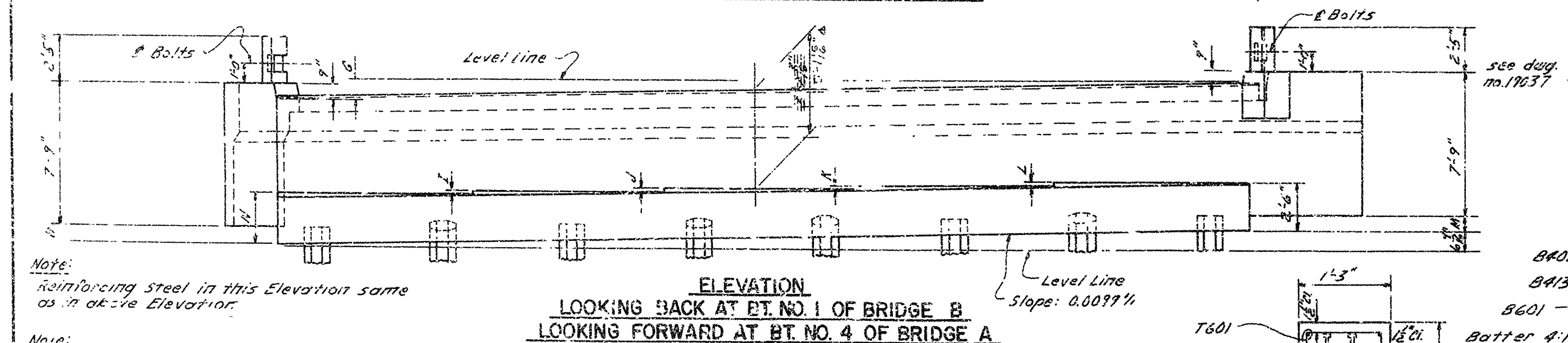
① 5611A+B END BT. DLS. 19032



ANCHOR BOLT LAYOUT  
Scale:  $1\frac{1}{2}'' = 1'-0''$



LOOKING BACK AT BT. NO. 1 OF BRIDGE A  
LOOKING FORWARD AT BT. NO. 4 OF BRIDGE B

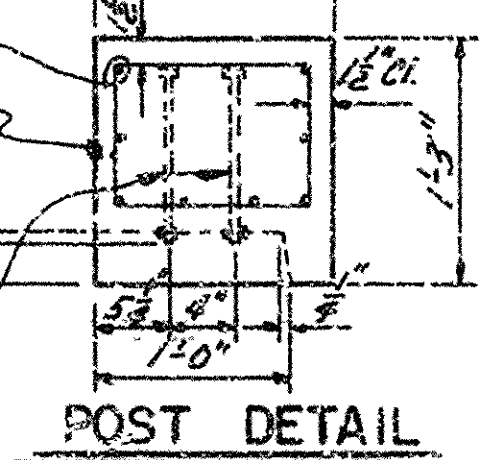


ELEVATION  
LOOKING BACK AT BT. NO. 1 OF BRIDGE B  
LOOKING FORWARD AT BT. NO. 4 OF BRIDGE A

Note:  
Reinforcing steel in this Elevation same as in above Elevation.

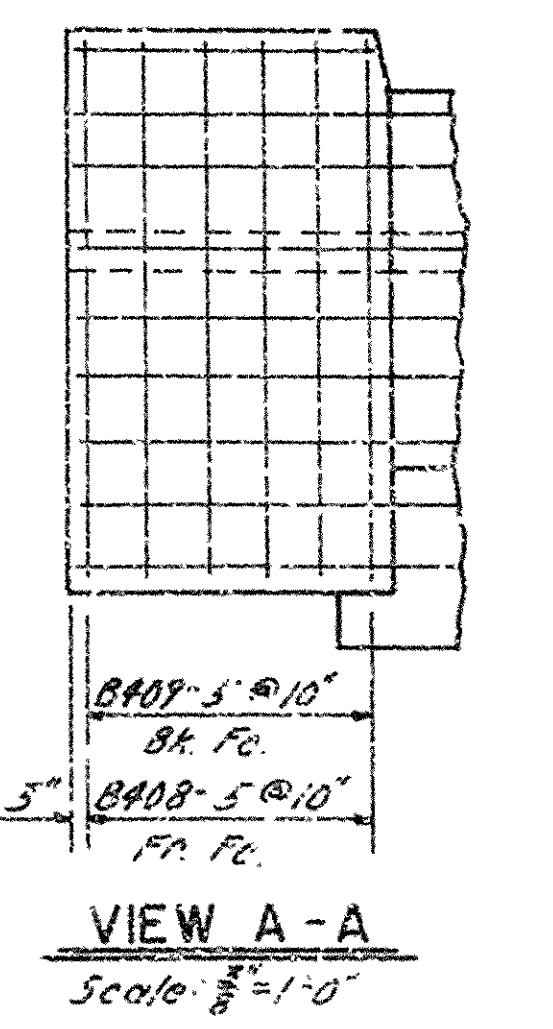
Note:  
All concrete shall be Class 5 and shall be poured in the dry. Reinforcing Steel to be deformed bars of ASTM A615, Grade 60. Shop List and Bending Diagrams must be submitted and approval secured before Fabrication is begun.  
Piling shall be 16" Octagonal Precast Piling. All Structural Steel to be ASTM A36.  
Beams shall be in place before backfill is poured.  
For Shoe type and location and General Notes see Layout. For Shoe Details see drawing no. 19039.

2-1/4" A325 Hi-Strength Bolts 8"  
long with 2" threads, 2 clipped &  
2 full flat washers, 1 double washer  
and 4 nuts, all galvanized in  
accordance with ASTM A153. - 5

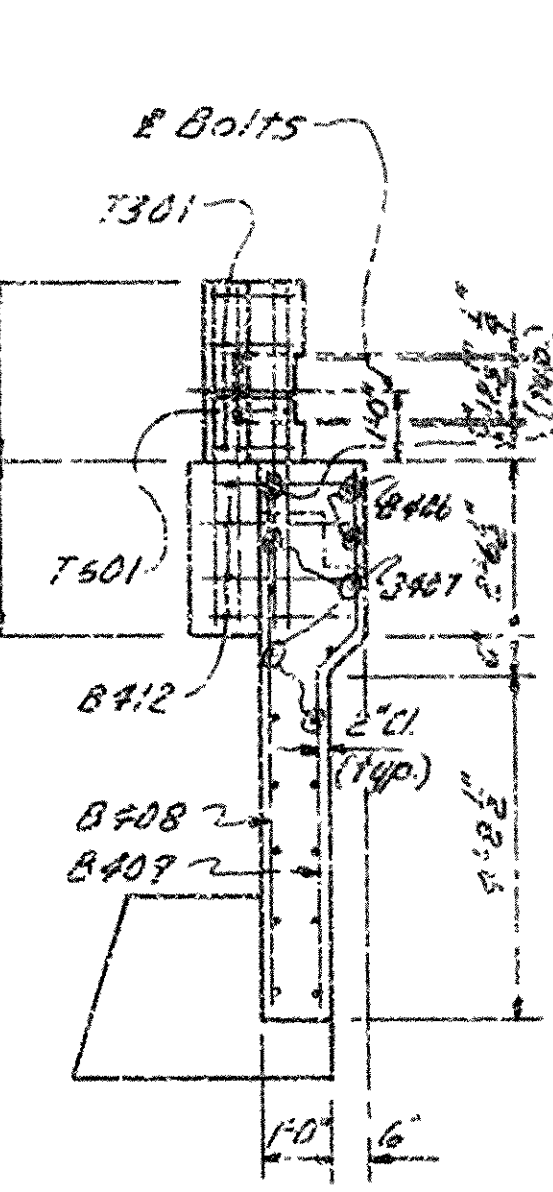


POST DETAIL

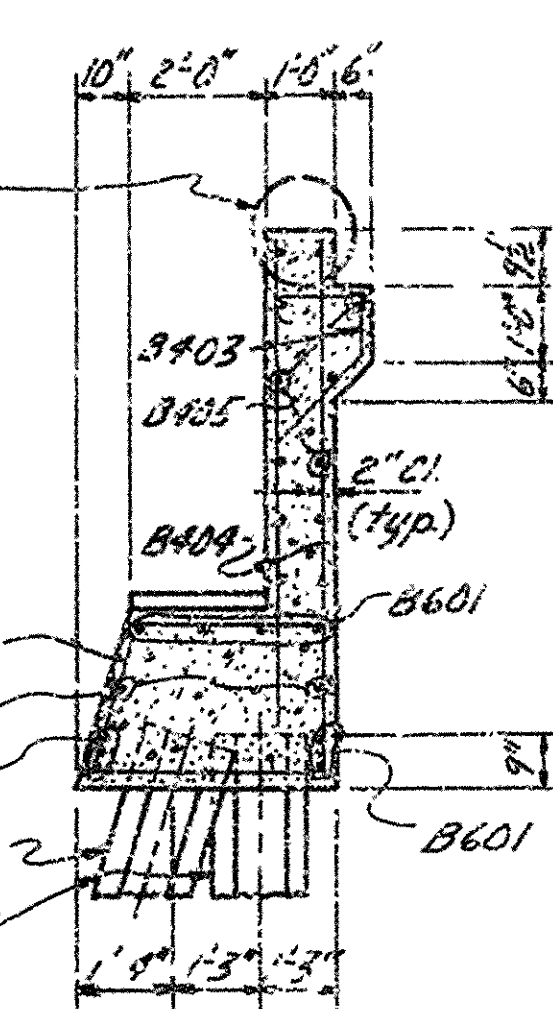
No. 1000



VIEW A-A  
Scale:  $\frac{1}{4}'' = 1'-0''$



VIEW C-C  
Scale: 1"=1'-0"



SECTION D-D  
Scale:  $\frac{1}{8}'' = 1'-0''$

BAR LIST PER END BENT						
BAR	No. Req'd	Length	A	B	Pin Dia.	Bending Diagrams
B401	6E	11'-8"			2"	
B402	2E	7'-0"			2"	
B403	5E	3'-4"	1'-2"	9"	2"	
B404	11E	6'-8"			5/16"	
B405	2E	28'-5"			5/16"	
B406	2	5'-0"			5/16"	
B407	15	8'-6"			5/16"	
B408	16	7'-5"			5/16"	
B409	12	7'-9"	2'-3 1/2"	4'-7 1/2"	2"	
B410	2	4'-4"			5/16"	
B411	16	6'-3"	4'-7"	1'-8"	2"	
B412	4	6'-3"	3'-2 1/2"	1'-9"	2"	
B413	4	28'-4"			5/16"	
B414	20	28'-8"			5/16"	
B415	3	4'-1"	1'-0"	8'-5"	1 1/8"	
B416	16	4'-7"			5/16"	
B417	1	6'-4"			5/16"	

## TABLE OF VARIABLES

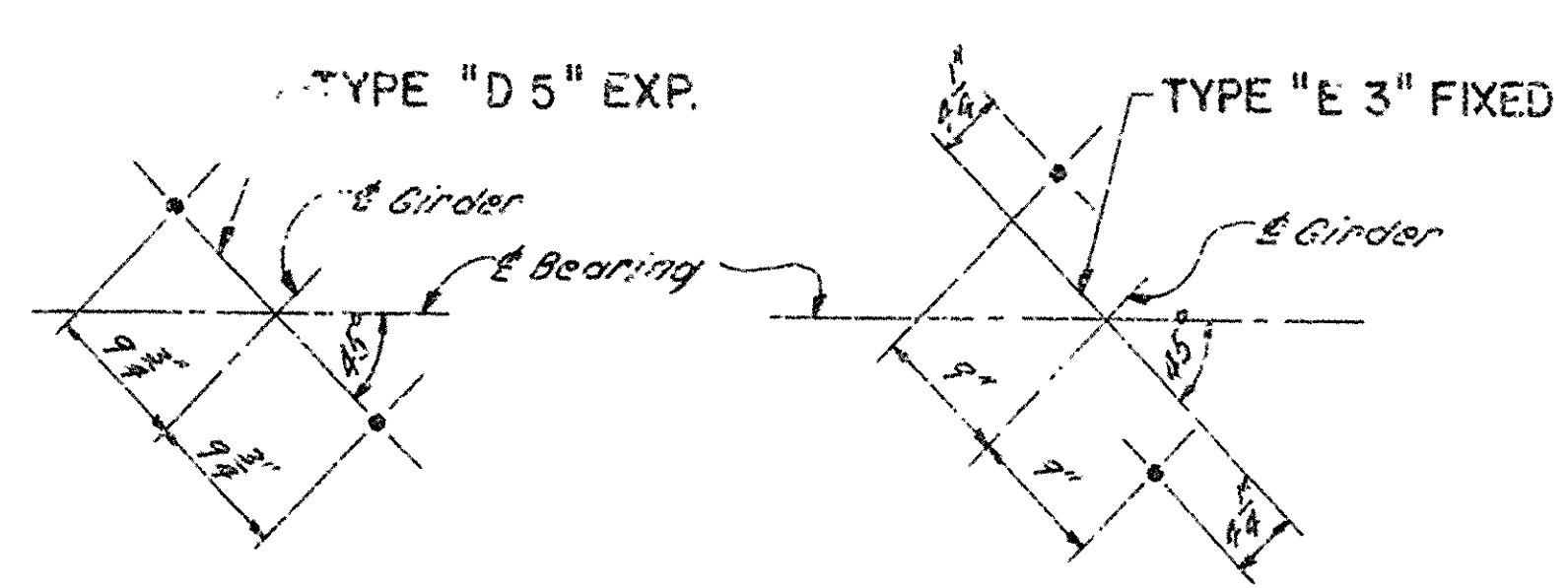
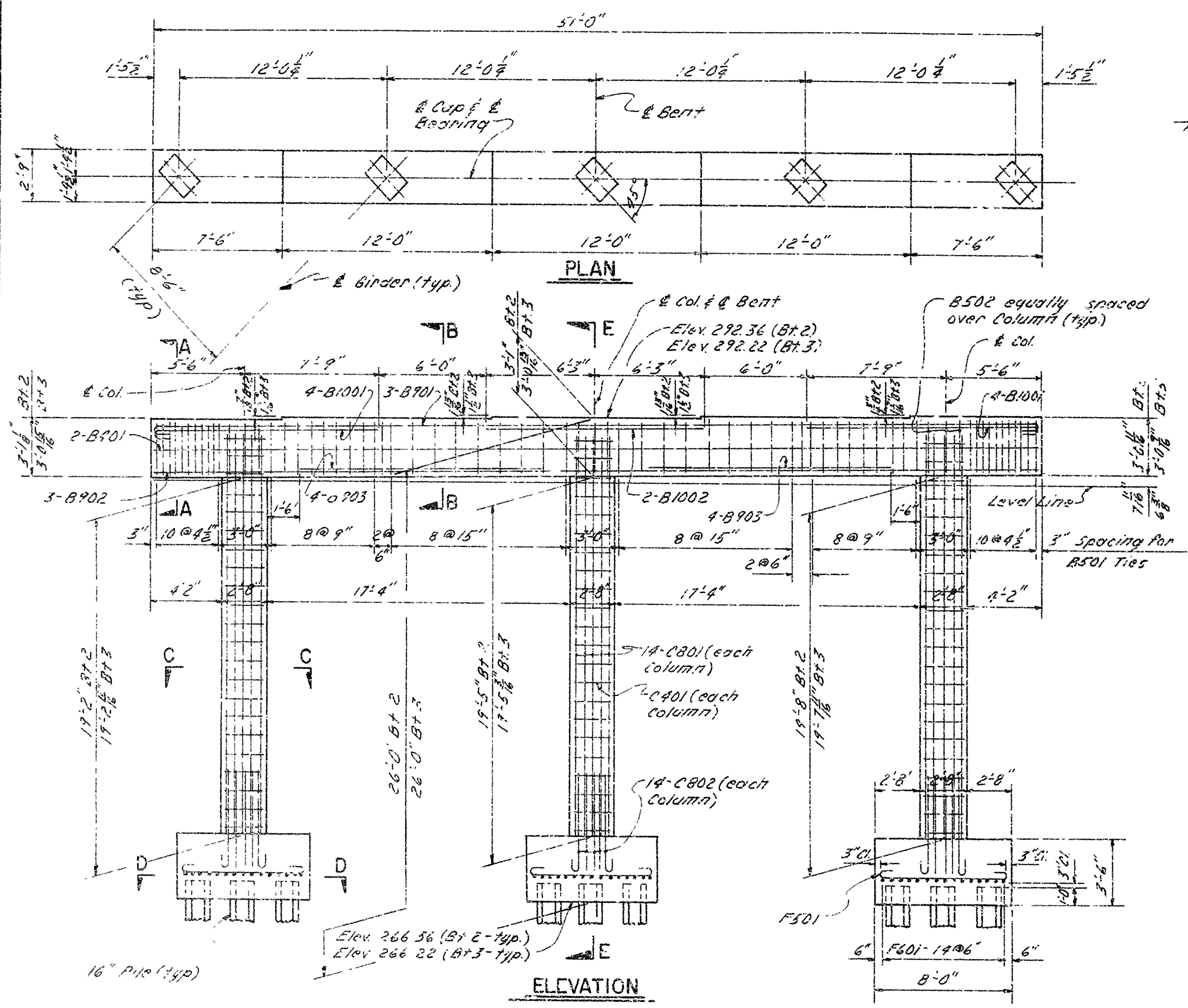
Variables	Bridge A		Bridge B	
	Bent No. 1	Bent No. 4	Bent No. 1	Bent No. 4
Elev. A	297.77	297.44	297.45	297.73
Elev. B	297.77	297.44	297.45	297.74
Elev. C	297.39	297.69	297.71	297.35
Elev. D	297.39	297.69	297.71	297.35
Elev. E	296.99	297.92	297.95	296.94
Elev. F	297.00	297.92	297.95	296.95
G	9 $\frac{3}{8}$ "	5 $\frac{3}{8}$ "	5 $\frac{15}{16}$ "	9 $\frac{1}{2}$ "
H	8 $\frac{3}{4}$ "	9 $\frac{1}{4}$ "	9 $\frac{3}{8}$ "	8 $\frac{5}{8}$ "
I	2"	1 $\frac{5}{8}$ "	1 $\frac{5}{16}$ "	2"
J	2"	1 $\frac{5}{8}$ "	1 $\frac{5}{16}$ "	2 $\frac{1}{16}$ "
K	2 $\frac{1}{16}$ "	1 $\frac{1}{4}$ "	1 $\frac{3}{16}$ "	2 $\frac{1}{16}$ "
L	2 $\frac{1}{16}$ "	1 $\frac{1}{4}$ "	1 $\frac{1}{4}$ "	2 $\frac{5}{8}$ "
M	10 $\frac{3}{8}$ "	8 $\frac{3}{8}$ "	8 $\frac{3}{8}$ "	9 $\frac{15}{16}$ "
N	2'-8 $\frac{1}{16}$ "	2'-7 $\frac{1}{16}$ "	2'-7 $\frac{3}{8}$ "	2'-8 $\frac{3}{8}$ "
P	1'-6 $\frac{3}{8}$ "	1'-6 $\frac{1}{2}$ "	1'-6 $\frac{3}{8}$ "	1'-6 $\frac{3}{8}$ "
Q	1'-11 $\frac{3}{16}$ "	1'-11 $\frac{1}{16}$ "	1'-11 $\frac{1}{16}$ "	1'-11 $\frac{3}{16}$ "
R	1'-1 $\frac{1}{16}$ "	1'-1 $\frac{1}{16}$ "	1'-1 $\frac{1}{16}$ "	1'-1 $\frac{3}{16}$ "

DETAILS OF END BENTS  
 HWY. 104  
 HIGHWAY 104-JEFFERSON ROAD  
 JEFFERSON COUNTY  
 ROUTE 65 SEC. 14  
 ARKANSAS STATE HIGHWAY COMMISSION  
 LITTLE ROCK, ARK.  
 8-2-76

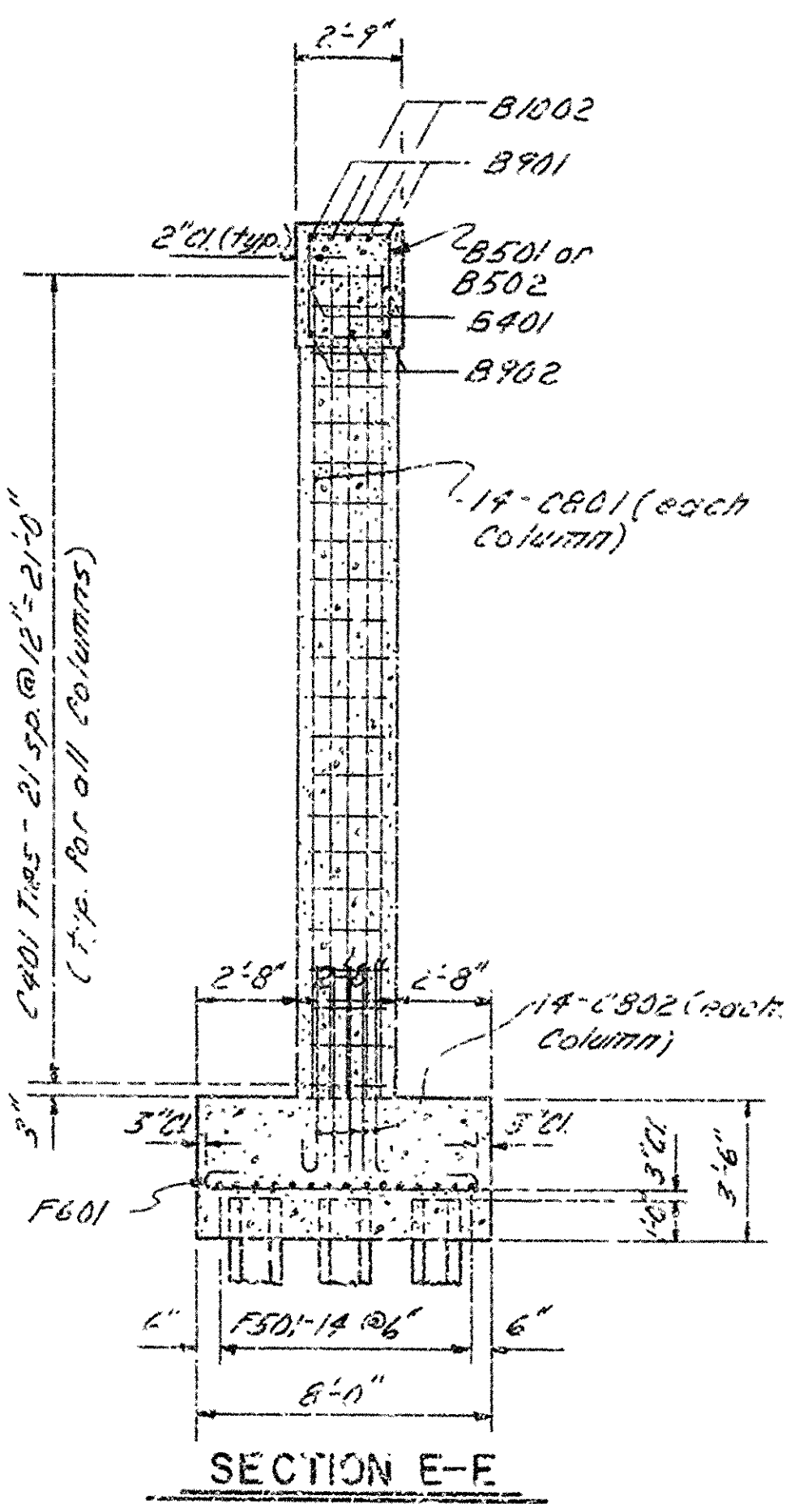
DRAWN BY: J.P.S. DATE: 8-2-74  
DESIGNED BY: APW DATE: 7-74 SCALE:  $\frac{1"}{4'} = 1"0"$  or as noted  
CHECKED BY: 728 DATE: 8-16-74  
BRIDGE NO. 5611 A & B DRAWING NO. 19032



DATE REVISED	DATE FILMED	DATE REVISED	DATE FILMED	FED. ROAD NO.	STATE	F.C.D. AID PROJ. NO.	TEXT	TOTAL SHEETS
				6	ARK.	LAC KF025-2(32)		
						JOB NO.	2793	14
						INT. BT. DTZ. S.	14:33	



ANCHOR BOLTS LAYOUTS  
Scale: 1/2"=1'-0"



BAR LIST-PER BENT

BAR	No.	Length	A	B	Pin Dia	Bending Diagrams
B501	6	26'-2"			5/8"	
B501	60	11'-5"	2'-5"	2'-8"	5/8"	
B502	9	7'-7"	2'-5"	2'-8"	5/8"	
B701	3	58'-2"	50'-9"	10"	9"	
B702	3	50'-8"			5/8"	
B703	8	13'-9"			5/8"	
B901	8	14'-6"	13'-4"	11'-2"	10"	
G1002	2	12'-6"			5/8"	
C401	66	8'-8"			5/8"	
C801	42	21'-6"			5/8"	
C802	42	6'-4"	5'-5"	8"	6"	
F501	45	8'-8"	7'-6"	5"	3/4"	
F601	45	8'-10"	7'-6"	6"	1/2"	

Dimensions are out to out of bars.

NOTE:

ALL CONCRETE SHALL BE CLASS "S" AND SHALL BE POURED IN 1' LAYERS.

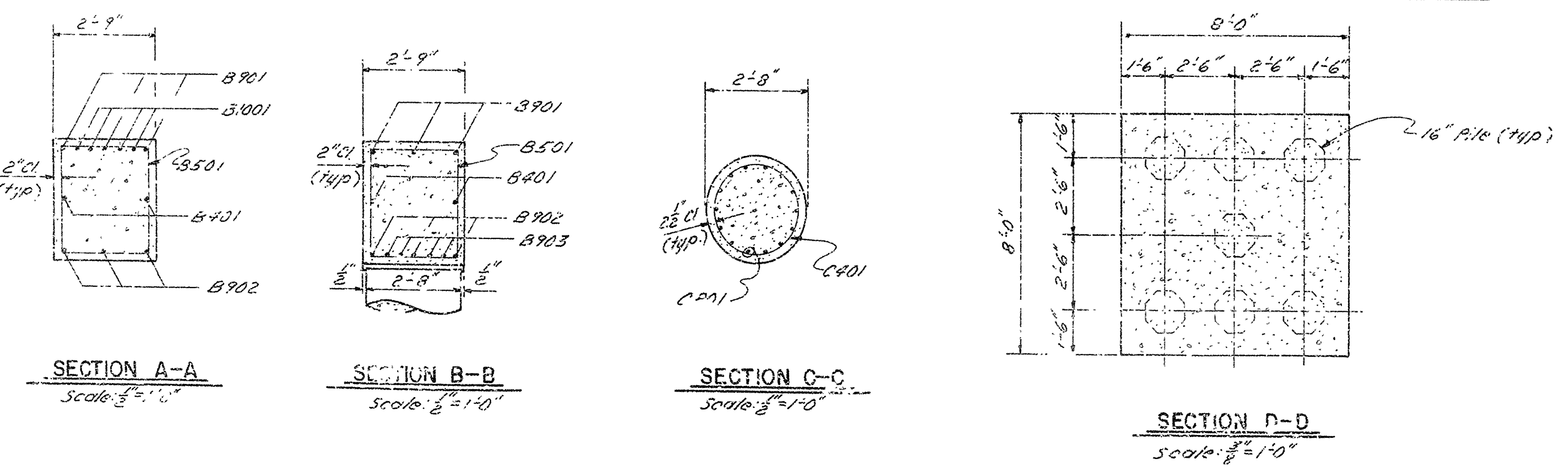
ALL EXPOSED CORNERS TO BE CHAMFERED 3/4" UNLESS OTHERWISE NOTED.

REINFORCING STEEL TO BE ASTM A615, GRADE 60.

SHOP LIST AND BENDING DIAGRAMS MUST BE SUBMITTED AND APPROVAL SECURED BEFORE FABRICATION IS BEGUN.

ALL PILING SHALL BE 16" O.D., PRECAST PILING.

METHOD OF DESIGN - LOAD FACTOR DESIGN



DETAILS OF  
INT. RENTS NOS. 2 & 3  
HWY. 104  
HIGHWAY 104-JEFFERSON ROAD  
JEFFERSON COUNTY  
ROUTE 65 SEC. 14  
ARKANSAS STATE HIGHWAY COMMISSION  
LITTLE ROCK, ARK.

DRAWN BY: J.P.S. DATE: 5-26-74  
DESIGNED BY: J.P.S. DATE: 7-74  
CHECKED BY: A.R.V. DATE: 10-3-74

BRIDGE NO. 5C11 A DRAWING NO. 19033











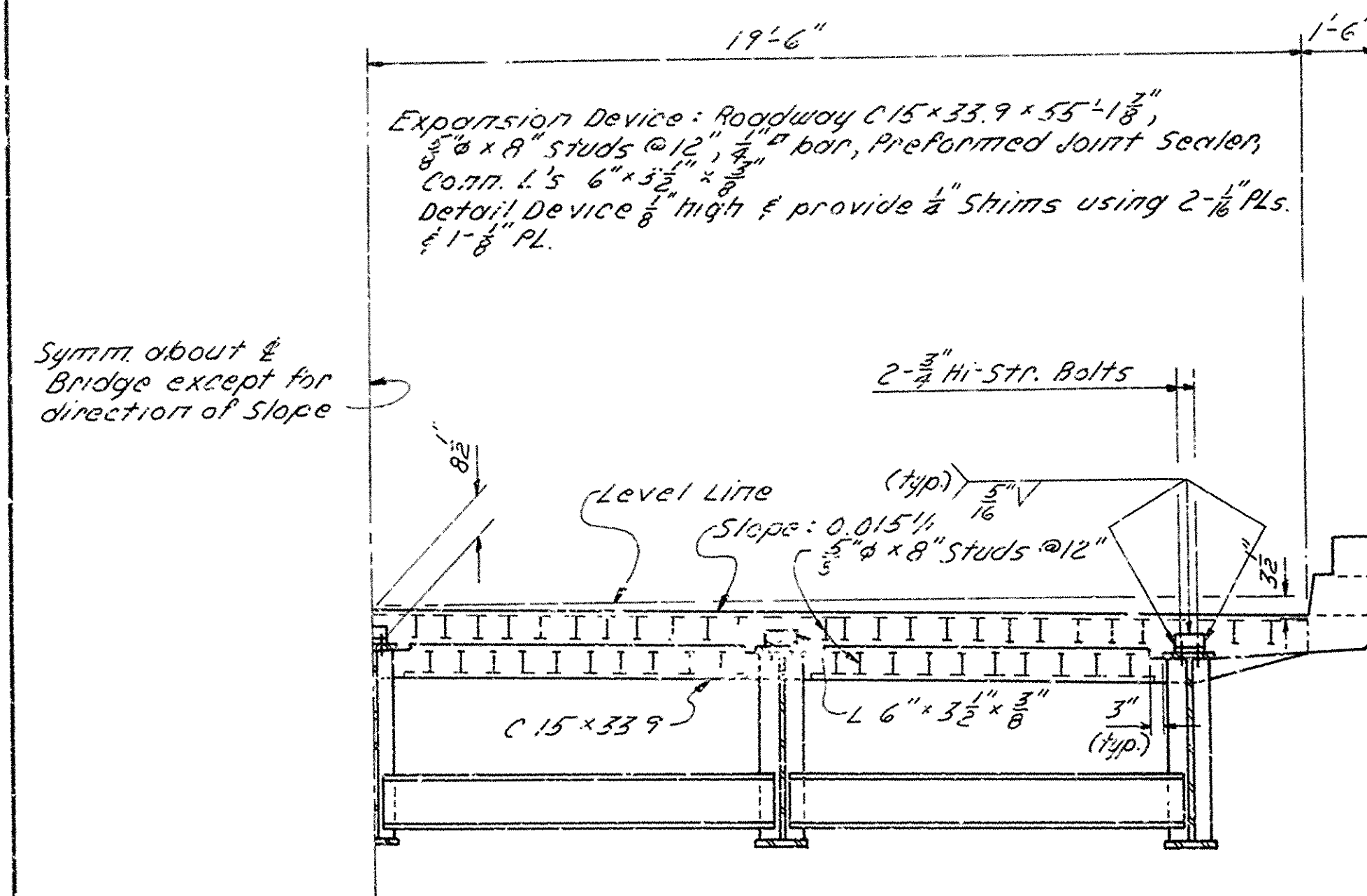








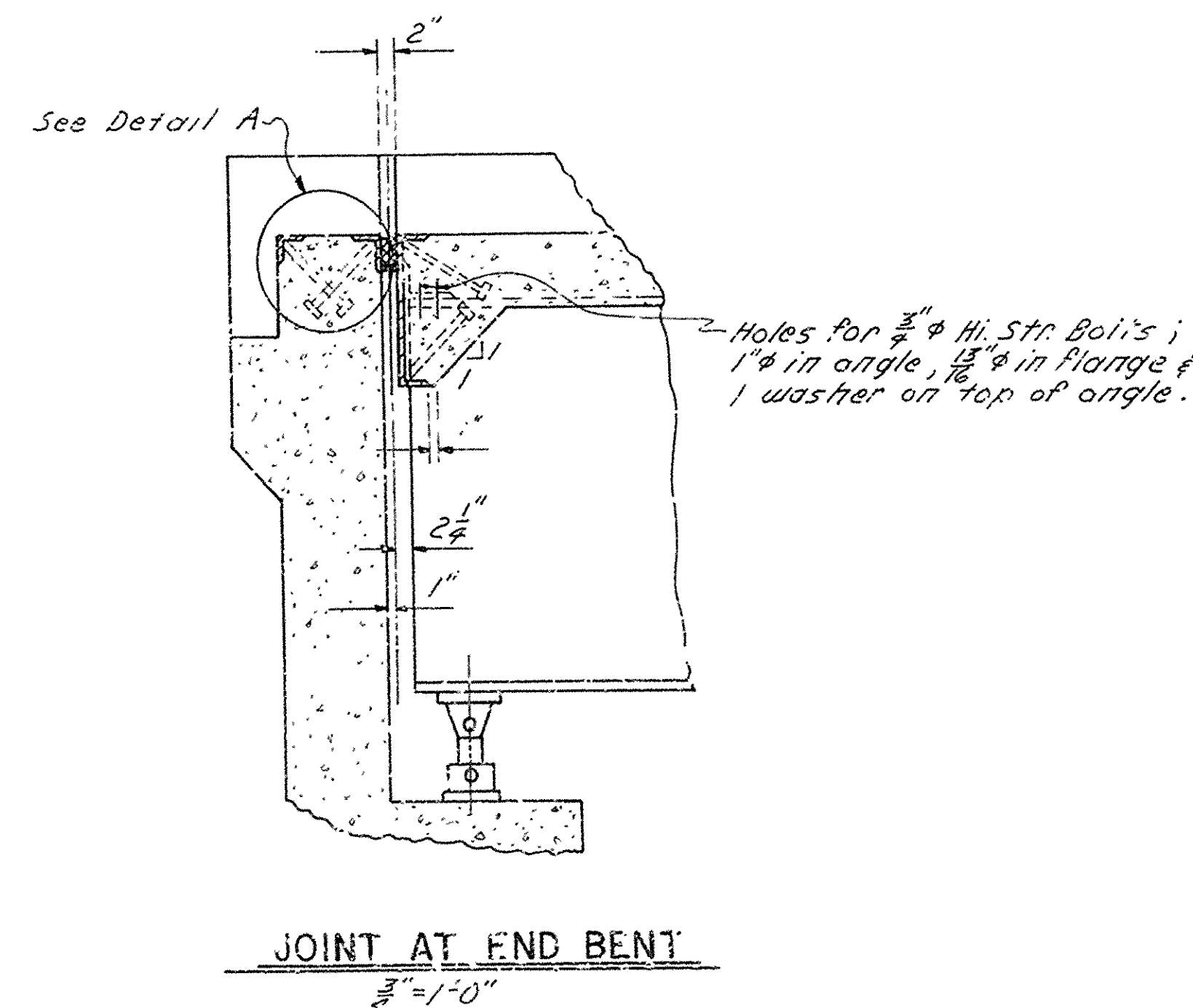
DATE REVISED	DATE FILMED	DATE REVISED	DATE FILMED	FED. ROAD NO.	STATE	FED. AID PROJ. NO.	SHEET NO.	TOTAL SHEETS
				6	ARK.	FAC RF-025-2(32)		
						JOB NO. 2783	48A	211
① 5611A & B EXP. DEVICE DTL'S								



HALF ROADWAY SECTION AT END OF SPAN

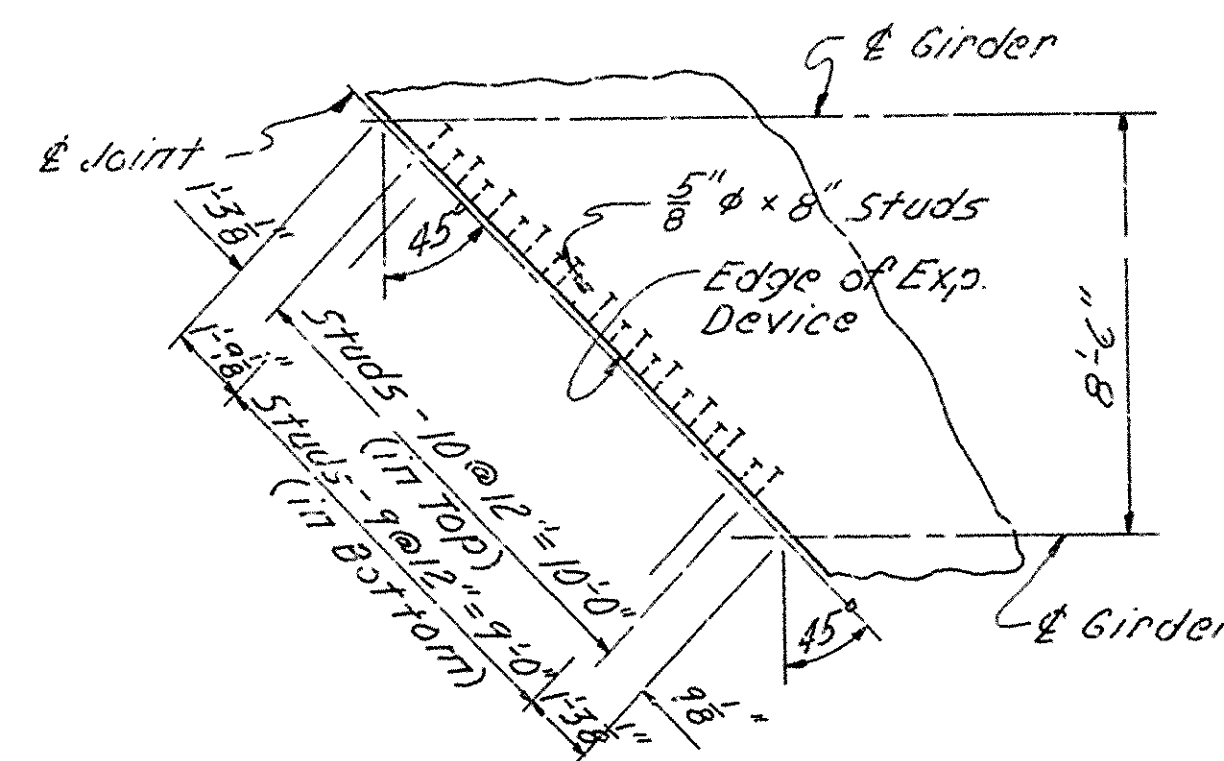
Note: Holes for 5/8 inch high strength bolts for Expansion Device may be 1/2 inch holes if a washer is supplied for use under both the nut & the head of the bolt.

Half Roadway Section is Looking Back at Bent 1 of Bridge A and Looking Forward at Bent 4 of Bridge B.



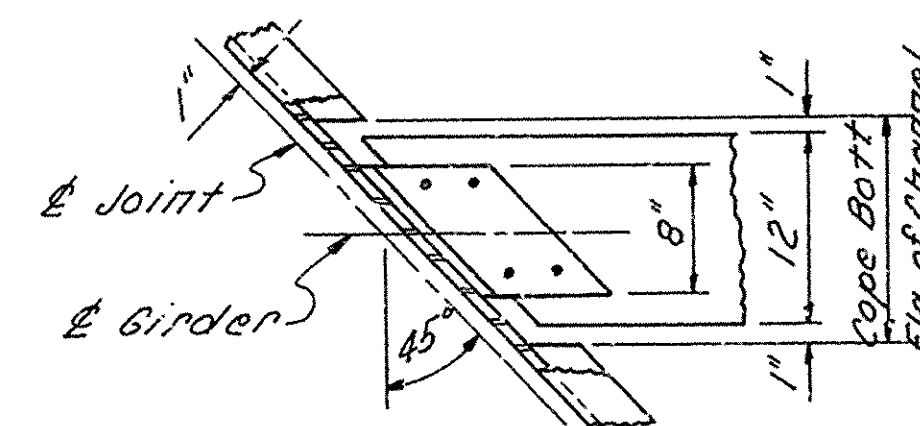
JOINT AT END BENT

Note: Details of Joint are shown based on level Grade. Adjustments shall be made for Grade.



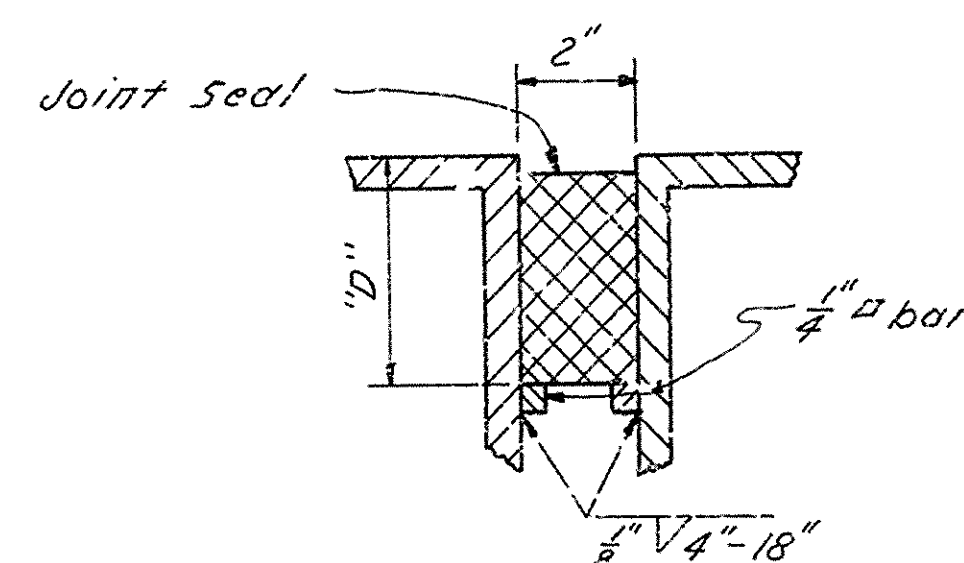
ANCHOR SPACING DETAIL

Scale: 1/4" = 1'-0"



CHANNEL CONNECTION

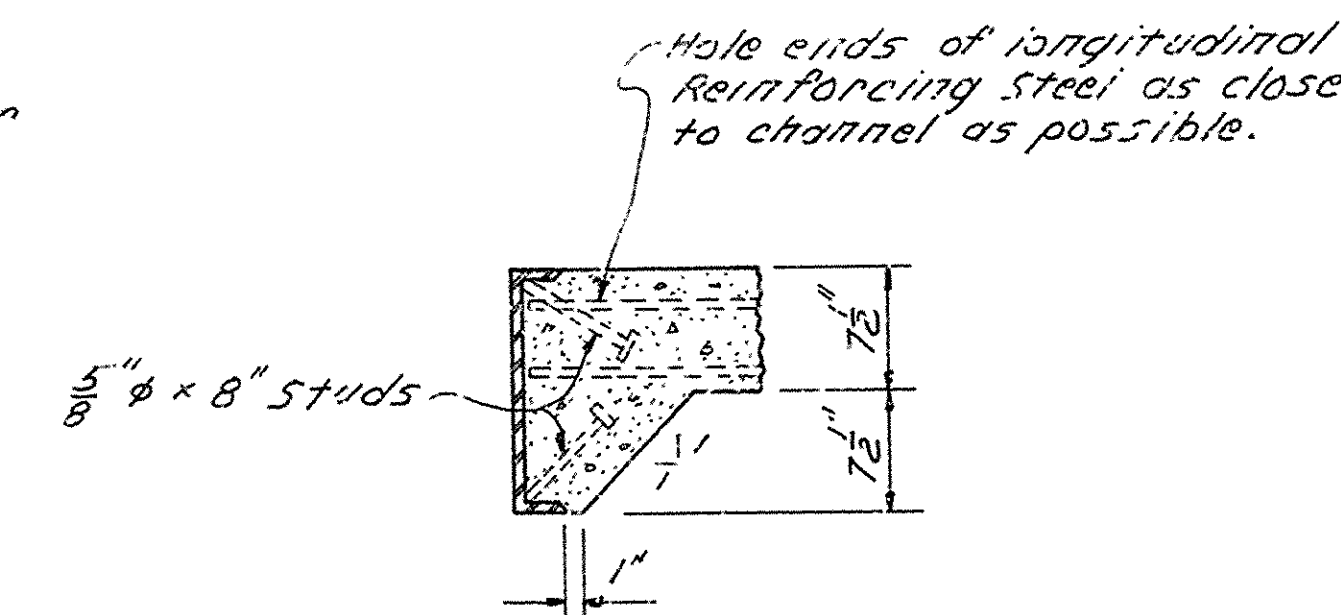
Scale: 1" = 1'-0"



JOINT SEAL SUPPORT

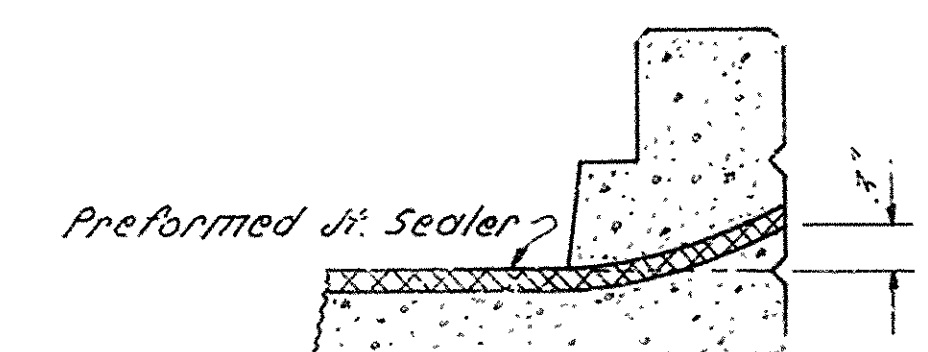
No Scale

Note: The dimension "D" shall conform to the recommendations of the Seal Manufacturer as approved by the Bridge Engineer. The depth of the Seal shall be approximately equal to the uncompressed width of the seal.



ANCHOR DETAIL

Scale: 1" = 1'-0"



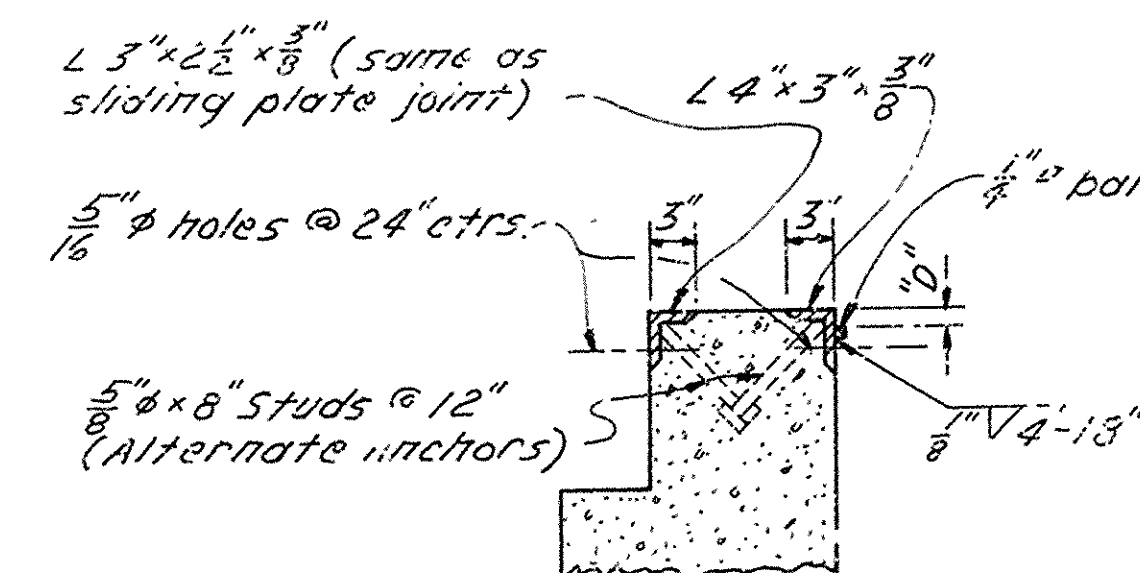
SEAL PLACEMENT IN CURB

No Scale

Note: Length of Preformed Jt Sealer = 58.2' per Joint.

STRUCTURAL STEEL QUANTITIES (PER JOINT)

	Preformed Jt	Sliding Jt	Difference
End Bent	734.96 Lbs.	3407.37 Lbs.	2472.41 Lbs.
Span	1921.92 Lbs.	3414.66 Lbs.	1492.74 Lbs.
Totals	2856.88 Lbs.	6822.03 Lbs.	3965.15 Lbs.



DETAIL A

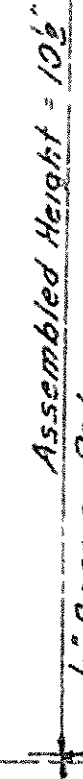
Scale: 1" = 1'-0"

SUPPLEMENTAL DETAILS OF  
EXPANSION DEVICE AT  
BENT NO. 1 - BRIDGE NO. 5611A &  
BENT NO. 4 - BRIDGE NO. 5611B  
HWY. 104  
HIGHWAY 104 - JEFFERSON ROAD  
JEFFERSON COUNTY  
ROUTE 65 SEC. 14  
ARKANSAS STATE HIGHWAY COMMISSION

LIT FILE ROCK, ARK.  
DRAWN BY: J.P.S. DATE: 1-10-75  
CHECKED BY: JCR DATE: 1-15-75 SCALE: AS SHOWN  
DESIGNED BY: DATE:  
BRIDGE NO. 5611A & B DRAWING NO. 150314

BRIDGE ENGINEER





Material: Steel Castings ASTM A27 Grade 70-40, & ASTM A-36



Material: Steel Castings ASTM A27 Grade 70-40

3"  $\phi$  x 1/4" washer.



\* 1 1/2" x 1 1/2" Swedge for D1 & D2  
Exp. shoes & 1/2" Fixed shoe.  
1 1/4" x 1 1/8" Swedge for D5  
Exp. shoe.



### TABLE OF DEFLECTIONS (IN)

CAMBER FOR DEAD LOAD DEFLECTION PLUS VERTICAL CURVE  
±4" TOLERANCE. DEFLECTIONS SHOWN ARE FROM A CHORD  
FROM CENTERLINE BEARING TO CENTERLINE BEARING.  
VERTICAL CURVE CORRECTIONS NOT INCLUDED. NEGATIVE  
SIGN (-) INDICATES POINT ABOVE CHORD.

Assembled 11/6/94 + 154

Material: Steel Castings ASTM A27 Grade 70-10, R ASTM A-36.

LITTLE ROCK, ARK.

*Samuel Pinkerton*  
BRIDGE ENGINEER

BRIDGE NO. 5611 <sup>A</sup><sub>B</sub> DRAWING NO. 19038